

Discount Schemes

Multiple Subject/Siblings Discount

**only applies to programme fees*

- 2 subjects - 5% off each prog
- 3 subjects - 10% off each prog
- 4 subjects - 15% off each prog
- 5 subjects or more - 20% off each prog

Payment Plan Discount

**only applies to programme fees*

- Half-Yearly (by Semester) - additional 2% off each prog

P6: 1st Month & April 2026

Other Levels: 1st Month & June 2026

- Annual (whole AY) - additional 5% off each prog

PSLE Maths Mastery Booster Package

✓ P6 Maths + 2 other subjects (10% discount each) + FREE Maths Booster

✓ P6 Maths + 3 other subjects (15% discount each) + FREE Maths Booster

✓ P6 Maths + 4 other subjects (20% discount each) + FREE Maths Booster

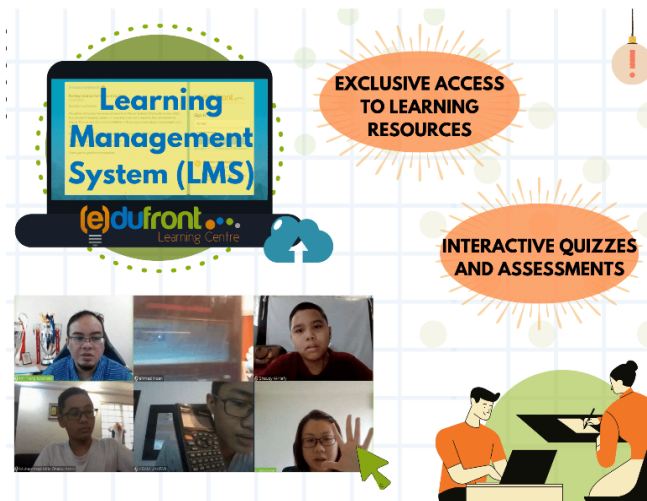
P3-P6 Maths Booster Package

- ✗ Enrol in the regular Maths Mastery Programme
- ✗ Get an additional Weekly Maths Booster class at 50% OFF

P3-P6 Malay Mastery Combo Promo

- ✗ Enrol in Malay Mastery Programme + Karangan Writing Programme
- ✗ Enjoy 20% OFF both subjects

All discounts are capped at 50%



Edufront Learning Centre (Pasir Ris 2)
Blk 483 Pasir Ris Drive 4 #B1-477 Singapore 510483

Opening Hours:

Tues, Wed, Thurs & Fri: 2pm - 9pm
Sat & Sun: 8.30am - 5pm

Tel: 8208 2997 (SMS/WhatsApp)



Pasir Ris Branch 2 (Blk 483)

Schedule for Academic Year 2026

Kindergarten & Primary Programmes

Class Commencement Date:

■ 4th November 2025 (Primary 6)

■ 2nd December 2025 (Other Levels)

! Please note that a **minimum of 2 students** is required to start a class.

Overall Fee Structure (incl. of 9% GST)

■ One-off Registration Fee: **\$32.70/new student**

■ Refundable Deposit: **\$50/subject**

■ LMS & Materials Fee (per semester): **\$65.40/subject**

*Fees can be pro-rated depending on the start date

Trial Lesson: \$10.90/lesson

Why Edufront?

1. Proven Track Record
2. NIE-Trained and Subject Specialist Tutors
3. Comprehensive Programmes
4. Small Group Classes
5. Technology Enabled Learning
6. Flexibility of Physical & Online Classes
7. Trial Class



BEST PSLE TUITION CENTRE

PASIR RIS BRANCH (BLK 483)	
K2 Class (Monthly: \$185.30 per subject)	
Programme	Day & Time
Malay	Sunday 3.30pm - 5pm

Primary 1 (Monthly: \$196.20 per subject)	
Programme	Day & Time
English	Sunday 9.30am - 11am
Maths	Sunday 1.30pm - 3pm
Malay	Friday 5.30pm - 7pm
	Sunday 11.30am - 1pm

Primary 2 (Monthly: \$207.10 per subject)	
Programme	Day & Time
English	Sunday 9.30am - 11am
Maths	Sunday 1.30pm - 3pm
Malay	Thursday 7.30pm - 9pm
	Sunday 11.30am - 1pm

Primary 3 (Monthly: \$218.00 per subject)	
Programme	Day & Time
English	Sunday 3.30pm - 5pm
Maths	Saturday 2pm - 3.30pm
Maths Booster	Sunday 1.30pm - 3pm
Science	Thursday 5.30pm - 7pm
Malay	Wednesday 5.30pm - 7pm
	Saturday 10am - 11.30am
	Sunday 9.30am - 11am
Malay (Karangan)	Wednesday 7.30pm - 9pm
	Saturday 4pm - 5.30pm

PASIR RIS BRANCH (BLK 483)	
Primary 4 (Monthly: \$228.90 per subject)	
Programme	Day & Time
English	Sunday 1.30pm - 3pm
Maths	Wednesday 7.30pm - 9pm
Maths Booster	Saturday 2pm - 3.30pm
Science	Friday 7.30pm - 9pm
Malay	Tuesday 7.30pm - 9pm
	Wednesday 5.30pm - 7pm
	Saturday 4pm - 5.30pm
Malay (Karangan)	Thursday 5.30pm - 7pm
	Saturday 2pm - 3.30pm

Primary 5 (Monthly: \$239.80 per subject)	
Programme	Day & Time
English	Wednesday 7.30pm - 9pm
	Sunday 11.30am - 1pm
Maths	Tuesday 7.30pm - 9pm
	Sunday 3.30pm - 5pm
Maths Booster	Wednesday 7.30pm - 9pm
Science	Thursday 7.30pm - 9pm
Malay	Tuesday 5.30pm - 7pm Tutor: Cikgu Hayati (Hybrid)
	Friday 5.30pm - 7pm
	Saturday 12pm - 1.30pm
Malay (Karangan)	Friday 7.30pm - 9pm
	Saturday 10am - 11.30am

PASIR RIS BRANCH (BLK 483)	
Primary 6 (Monthly: \$250.70 per subject)	
Programme	Day & Time
English	Wednesday 5.30pm - 7pm
	Saturday 10am - 11.30am
Maths	Thursday 5.30pm - 7pm
	Saturday 2pm - 3.30pm Tutor: Mr Yang
Maths Booster	Tuesday 7.30pm - 9pm
	Sunday 3.30pm - 5pm
Science	Thursday 7.30pm - 9pm
	Saturday 4pm - 5.30pm Tutor: Mr Yang
Malay	Tuesday 7.30pm - 9pm Tutor: Cikgu Hayati (Hybrid)
	Friday 5.30pm - 7pm
	Saturday 12pm - 1.30pm
Malay (Karangan)	Tuesday 5.30pm - 7pm
	Saturday 12pm - 1.30pm

Maths Booster Programme

Our Booster Classes help students revisit key P5/P4/P3/P2 topics and strengthen their foundation in preparation for the PSLE/exams.

- ✦ Recommended for students scoring 60% and below, but open to all who want extra support.
- ✦ Taken in addition to the regular class, providing twice the support each week.

[New] Malay (Karangan) Programme

- ✦ Malay (Karangan) focuses largely on writing Malay composition, an elaboration of our Saya Boleh Mengarang workshop that we have been conducting in schools.
- ✦ We do not provide karangan during the regular Malay class