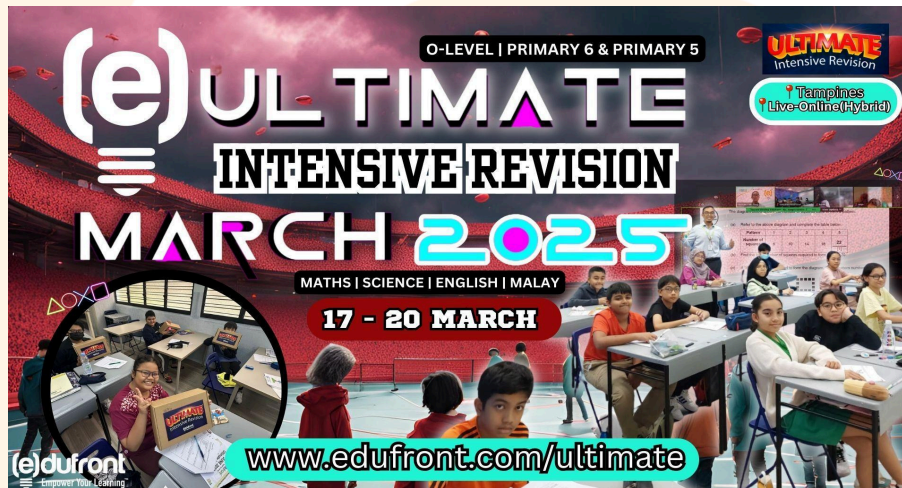


## 2025 March School Holiday (17-20 March) PSLE and Primary 5 Intensive Revision Workshops [Physical / Online]



Dear Parents,

We are pleased to offer our Intensive Revision Programme during the March School Holidays to support students' preparations for the 2025 PSLE exams. These programmes are designed and led by Mr. Yang Iskandar (Maths and Science) and Cikgu Hayati Abdullah (Malay), alongside our experienced tutors.



### English

- PSLE Writing Workshop
- PSLE Comprehension Workshop

### Maths

- PSLE Maths Heuristics Problem-Solving Strategies
- Primary 5 Maths Heuristics Problem-Solving Strategies

### Science

- PSLE Science Answering Techniques (Experiment & Application Questions)
- Primary 5 Science Answering Techniques (Experiment & Application Questions)

### Malay

- PSLE Karangan & Imbuan Workshops
- Darjah 5 Mengarang & Imbuan Workshops

All **current students** enrolled in any of our 2025 Weekly Tuition Programme (all centres) are eligible for a **discount of \$20 per programme**. Additional package discounts of **up to \$20** are also available for siblings/multiple programmes. To register, kindly visit our website at <https://edufront.com/ultimate> or approach our admin staff at the reception at any of our centres. Seats are limited—register now!

Warm regards,  
Yang Iskandar (Mr)  
Principal



**Primary Maths Workshop**

**Programme Developer: Mr Yang Iskandar, Principal Tutor [MSc, BBA (Hons), NUS Research Scholar, PGDE (NIE/NTU), Former HOD]**

**PSLE Maths Heuristics Problem-Solving Strategies Workshop**

The **PSLE Maths Heuristics Problem-Solving Strategies Workshop** is a **2-day, 3-hour intensive programme** designed to equip Primary 6 pupils with **intermediate to advanced techniques** for tackling challenging, non-routine questions commonly found in PSLE Mathematics Paper 2. The strategies taught cover key topics in the Primary Maths syllabus, including **Fractions, Ratio, Decimals, and Percentage**. Students will learn advanced techniques such as:

1. Advanced Model Drawing
2. Remainder Concept / Branching
3. Listing
4. Repeated Identity
5. External Unchanged
6. Total Unchanged
7. Constant Difference
8. Equal Fractions



This workshop aims to build confidence and enhance problem-solving skills for exam success.

**Duration:** 2 days x 3hrs (Total: 6 h – equivalent to 1 month of tuition)

**Levels:** Primary 6

**Target Group:** Low/Mid-achieving Level (students scoring less than 70%)

**Fees (excluding GST):**

- New students: \$250
- Former Students: \$240 (\$10 off)
- Current Students: \$230 (\$20 off)



[www.edufront.com/ultimate](http://www.edufront.com/ultimate)

**REGISTER NOW**

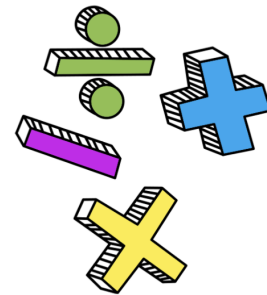
**SCHEDULE:**

DATE	TIME	BRANCH
17 & 18 Mar (Mon & Tue)	10.00am - 1.00pm	Tampines <b>[Mr Yang]</b>
17 & 18 Mar (Mon & Tue)	10.00am - 1.00pm	LiveOnline via Zoom <b>[Mr Yang]</b>
19 & 20 Mar (Wed & Thu)	2.00pm - 5.00pm	Tampines
19 & 20 Mar (Wed & Thu)	2.00pm - 5.00pm	LiveOnline via Zoom

## Primary 5 Maths Heuristics Problem-Solving Strategies Workshop

The **Primary 5 Maths Heuristics Problem-Solving Strategies Workshop** is a **2-day, 3-hour intensive programme** designed to equip Primary 5 pupils with **intermediate to advanced strategies** to tackle challenging, non-routine questions commonly found in Paper 2. It also aims to prepare them early for the rigour of the PSLE. The strategies taught cover key topics in the Primary Maths syllabus, including **Numbers** and **Fractions**, and include techniques such as:

1. Advanced Model Drawing
2. Remainder Concept / Branching
3. Guess and Check
4. Listing
5. Repeated Identity
6. External Unchanged
7. Total Unchanged
8. Constant Difference
9. Equal Fractions



This workshop helps students build problem-solving confidence and excel in mathematics.

**Duration:** 2 days x 3hrs (Total: 6 h – equivalent to 1 month of tuition)

**Levels:** Primary 5

**Target Group:** Low/Mid-achieving Level (students scoring less than 70%)

**Fees (excluding GST):**

- New students: \$250
- Former Students: \$240 (\$10 off)
- Current Students: \$230 (\$20 off)

**LEVEL UP**



[www.edufront.com/ultimate](http://www.edufront.com/ultimate)

**REGISTER NOW**

### SCHEDULE:

DATE	TIME	BRANCH
17 & 18 Mar (Mon & Tue)	10.00am - 1.00pm	Tampines
17 & 18 Mar (Mon & Tue)	10.00am - 1.00pm	LiveOnline via Zoom
19 & 20 Mar (Wed & Thu)	2.00pm - 5.00pm	Tampines
19 & 20 Mar (Wed & Thu)	2.00pm - 5.00pm	LiveOnline via Zoom



## Primary Science Workshop

**Programme Developer: Mr Yang Iskandar, Principal Tutor [MSc, BBA (Hons), NUS Research Scholar, PGDE (NIE/NTU), Former HOD]**

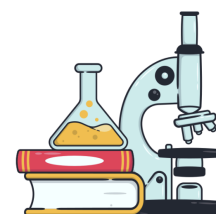
### PSLE Science Answering Techniques Workshop (Experiment and Application Questions)

The PSLE Science Answering Techniques Workshop is a highly popular 2-day x 3hr programme to equip students with the Process Skills and Answering Strategies to score in PSLE Science. Students would be taught strategies on how to apply concepts and process skills to challenging higher-order problems and to answer the Open-Ended questions in Section B with confidence and precision.

The following **PSLE question-type and concepts** would be explicitly discussed during the workshop:

#### 1) Experimental Techniques

- Identifying AIM of experiment
- Identifying the Variables (Constant, Changed, Dependent, Measured)
- Designing a FAIR TEST
- Creating a CONTROL setup
- Analysing results, data and graphs



#### 2) Application-type questions (challenging!)

- Step-by-step template to conquer application question using the heuristics approach
- Techniques to link science concepts to question

**Duration:** 2 days x 3hrs (Total: 6 h – equivalent to 1 month of tuition)

**Levels:** Primary 6

**Target Group:** All Ability Levels

**Fees (excluding GST):**

- New students: \$250
- Former Students: \$240 (\$10 off)
- Current Students: \$230 (\$20 off)



[www.edufront.com/ultimate](http://www.edufront.com/ultimate)

**REGISTER NOW**

#### SCHEDULE:

DATE	TIME	BRANCH
17 & 18 Mar (Mon & Tue)	2.00pm - 5.00pm	Tampines <b>[Mr Yang]</b>
17 & 18 Mar (Mon & Tue)	2.00pm - 5.00pm	LiveOnline via Zoom <b>[Mr Yang]</b>
19 & 20 Mar (Wed & Thu)	10.00am - 1.00pm	Tampines <b>[Mr Yang]</b>
19 & 20 Mar (Wed & Thu)	10.00am - 1.00pm	LiveOnline via Zoom <b>[Mr Yang]</b>



**Primary 5 Science Answering Techniques Workshop (Experiment and Application Questions)**

The Primary 5 Science Answering Techniques Workshop is a highly popular 2-day x 3hr programme to equip students with the Process Skills and Answering Strategies to score in PSLE Science. Students would be taught strategies on how to apply concepts and process skills to challenging higher-order problems and to answer the Open-Ended questions in Section B with confidence and precision.

The following PSLE question-type and concepts would be explicitly discussed during the workshop:

**1) Experimental Techniques**

- Identifying AIM of experiment
- Identifying the Variables (Constant, Changed, Dependent, Measured)
- Designing a FAIR TEST
- Creating a CONTROL setup
- Analysing results, data and graphs

**2) Application-type questions (challenging!)**

- Step-by-step template to conquer application question using the heuristics approach
- Techniques to link science concepts to question

**Duration:** 2 days x 3hrs (Total: 6 h – equivalent to 1 month of tuition)

**Levels:** Primary 5

**Target Group:** All Ability Levels

**Fees (excluding GST):**

- New students: \$250
- Former Students: \$240 (\$10 off)
- Current Students: \$230 (\$20 off)



[www.edufront.com/ultimate](http://www.edufront.com/ultimate)



**SCHEDULE:**

DATE	TIME	BRANCH
17 & 18 Mar (Mon & Tue)	2.00pm - 5.00pm	Tampines
17 & 18 Mar (Mon & Tue)	2.00pm - 5.00pm	LiveOnline via Zoom
19 & 20 Mar (Wed & Thu)	10.00am - 1.00pm	Tampines
19 & 20 Mar (Wed & Thu)	10.00am - 1.00pm	LiveOnline via Zoom

## Primary English Workshop

**Programme Developer:** Mr Yang Iskandar, Principal Tutor [MSc, BBA (Hons), NUS Research Scholar, PGDE (NIE/NTU), Former HOD]

### PSLE English Writing Workshop

The 2-day, 3-hour Writing Workshop aims to develop students' writing ability in the 1) Situational Writing and 2) Continuous Writing components. In the Situational Writing component, students will learn how to produce a short functional piece (e.g., letter and email) to suit the purpose, audience, and context of a given situation. The Continuous Writing component of the workshop focuses on enhancing students' ability to write a composition in continuous prose on a given topic, using techniques to make the writing engaging, interesting, and relevant.

**Duration:** 2 days x 3hrs (Total: 6 h – equivalent to 1 month of tuition)

**Levels:** Primary 6

**Target Group:** All Ability Levels

**Fees (excluding GST):**

- New students: \$250
- Former Students: \$240 (\$10 off)
- Current Students: \$230 (\$20 off)

### SCHEDULE:

DATE	TIME	BRANCH
19 & 20 Mar (Wed & Thu)	10.00am - 1.00pm	Tampines
19 & 20 Mar (Wed & Thu)	10.00am - 1.00pm	LiveOnline via Zoom



[www.edufront.com/ultimate](http://www.edufront.com/ultimate)

**REGISTER NOW**

## PSLE English Comprehension Workshop

This Comprehension Workshop aims to enhance comprehension skills, critical thinking, and language proficiency. The workshop covers a range of comprehension strategies tailored to PSLE standards. Students will learn how to analyse and interpret various text types effectively, such as narratives, expository essays, and news articles, enabling them to practice identifying key ideas, making inferences, and answering comprehension questions accurately.

Students will delve into understanding vocabulary in context, developing inference skills, and recognizing literary devices to foster a deeper appreciation for reading.

**Duration:** 2 days x 3hrs (Total: 6 h – equivalent to 1 month of tuition)

**Levels:** Primary 6

**Target Group:** All Ability Levels

**Fees (excluding GST):**

- New students: \$250
- Former Students: \$240 (\$10 off)
- Current Students: \$230 (\$20 off)



[www.edufront.com/ultimate](http://www.edufront.com/ultimate)

REGISTER NOW

### SCHEDULE:

DATE	TIME	BRANCH
19 & 20 Mar (Wed & Thu)	2.00pm - 5.00pm	Tampines
19 & 20 Mar (Wed & Thu)	2.00pm - 5.00pm	LiveOnline via Zoom





## Bengkel Bahasa Melayu dan Persiapan PSLE Cuti Sekolah Bulan Mac 2025

### 2025 March School Holiday Malay Language Enrichment and Workshops

#### Bengkel Persiapan PSLE

**Programme Director:** Cikgu Hayati Abdullah, Best-selling Book Author of the 'Saya Boleh Mengarang' series. Principal and Director at NUSA and Edufront Learning Centre.

#### Bengkel Persiapan PSLE - Karangan

This 6-hr workshop aims to build students' confidence and mastery in PSLE Malay Paper 1 component (Karangan). In this workshop students would explore proven strategies to write a great composition based on Cikgu Hayati Abdullah's best-selling book and programme – Saya Boleh Mengarang. These include strategies to create a captivating plot, techniques to elicit writer's voice, usage of powerful vocabulary and sentence structures.

**Duration:** 2 days x 3hrs (Total: 6 hrs - equivalent to 1 month of tuition)

**Level:** Primary 6

**Target Group:** All Ability Levels

**Fees (excluding GST):**

- New students: \$250
- Former Students: \$240 (\$10 off)
- Current Students: \$230 (\$20 off)

LEVEL  
UP



[www.edufront.com/ultimate](http://www.edufront.com/ultimate)

REGISTER NOW

#### SCHEDULE:

DATE	TIME	BRANCH
17 & 18 Mar (Mon & Tue)	10.00am - 1.00pm	Tampines
17 & 18 Mar (Mon & Tue)	10.00am - 1.00pm	LiveOnline via Zoom
19 & 20 Mar (Wed & Thu)	10.00am - 1.00pm	Tampines
19 & 20 Mar (Wed & Thu)	10.00am - 1.00pm	LiveOnline via Zoom



## Bengkel Persiapan PSLE - Bahasa (Imbuhan)

This 6-hr workshop aims to help students unravel the functions of the different Imbuhan to enable them to ace the 20 marks Imbuhan component in Paper 2. We will be covering all the 'Awalan', 'Apitan' and 'Akhiran' taught and tested in the Primary School Malay Syllabus. Students will also learn to craft creative and powerful sentences using the various Imbuhan learnt.

**Duration:** 2 days x 3hrs (Total: 6 h - equivalent to 1 month of tuition)

**Levels:** Primary 6

**Target Group:** All Ability Levels

**Fees (excluding GST):**

- New students: \$250
- Former Students: \$240 (\$10 off)
- Current Students: \$230 (\$20 off)




[www.edufront.com/ultimate](http://www.edufront.com/ultimate)

REGISTER NOW

### SCHEDULE:

DATE	TIME	BRANCH
17 & 18 Mar (Mon & Tue)	2.00pm - 5.00pm	Tampines
17 & 18 Mar (Mon & Tue)	2.00pm - 5.00pm	LiveOnline via Zoom
19 & 20 Mar (Wed & Thu)	2.00pm - 5.00pm	Tampines
19 & 20 Mar (Wed & Thu)	2.00pm - 5.00pm	LiveOnline via Zoom

**Bengkel Bahasa Melayu Darjah 5**

**Programme Director: Cikgu Hayati Abdullah, Best-selling Book Author of the ‘Saya Boleh Mengarang’ series. Principal and Director at NUSA and Edufront Learning Centre.**

**Bengkel Saya Boleh Mengarang - Darjah 5**

This 6-hr workshop aims to build students’ confidence and mastery in PSLE Malay Paper 1 component (Karangan). In this workshop students would explore proven strategies to write a great composition based on Cikgu Hayati Abdullah’s best-selling book and programme – Saya Boleh Mengarang. These include strategies to create a captivating plot, techniques to elicit writer’s voice, usage of powerful vocabulary and sentence structures.

**Duration:** 2 days x 3hrs (Total: 6 h - equivalent to 1 month of tuition)

**Level:** Primary 5

**Target Group:** All Ability Levels

**Fees (excluding GST):**

- New students: \$250
- Former Students: \$240 (\$10 off)
- Current Students: \$230 (\$20 off)



[www.edufront.com/ultimate](http://www.edufront.com/ultimate)



**SCHEDULE:**

DATE	TIME	BRANCH
17 & 18 Mar (Mon & Tue)	10.00am - 1.00pm	Tampines
17 & 18 Mar (Mon & Tue)	10.00am - 1.00pm	LiveOnline via Zoom

Four horizontal rounded rectangular input fields for contact information.





## Bengkel Bahasa Melayu Darjah 5 - Imbuhan

This 6-hr workshop aims to help students unravel the functions of the different Imbuhan to enable them to ace the 20 marks Imbuhan component in Paper 2. We will be covering all the 'Awalan', 'Apitan' and 'Akhiran' taught and tested in the Primary School Malay Syllabus. Students will also learn to craft creative and powerful sentences using the various Imbuhan learnt.

**Duration:** 2 days x 3hrs (Total: 6 hrs - equivalent to 1 month of tuition)

**Level:** Primary 5

**Target Group:** All Ability Levels

**Fees (excluding GST):**

- New students: \$250
- Former Students: \$240 (\$10 off)
- Current Students: \$230 (\$20 off)

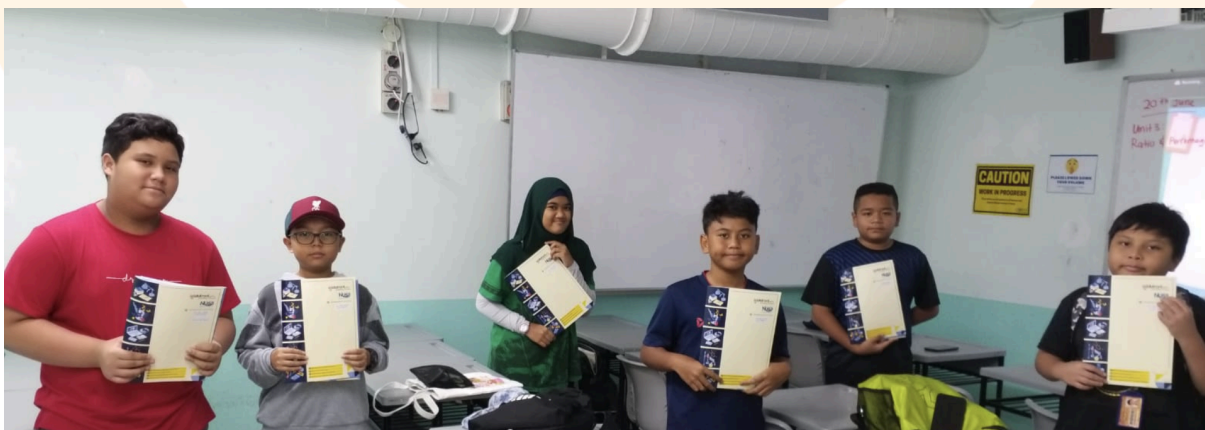



[www.edufront.com/ultimate](http://www.edufront.com/ultimate)

REGISTER NOW

### SCHEDULE:

DATE	TIME	BRANCH
17 & 18 Mar (Mon & Tue)	2.00pm - 5.00pm	Tampines
17 & 18 Mar (Mon & Tue)	2.00pm - 5.00pm	LiveOnline via Zoom



Register online at [www.edufront.com](http://www.edufront.com) | [www.malaytuitionsg.com](http://www.malaytuitionsg.com) or approach our friendly admin staff on duty