

2023 March School Holiday (13-16 March) Primary 5 Mastery, PSLE & O-Level Intensive Revision Workshops [100% Live Online via Zoom]

Dear Parents,

To further support our students in their academic achievements and preparations for the 2023 PSLE/MYE/O-Levels, we are offering our highly sought-after Intensive Revision programme in the upcoming March School Holidays.



The programmes are developed by our Principal Tutors – Mr Yang Iskandar (Maths and Science Programmes) and Cikgu Hayati Abdullah (Malay Programmes) and would be delivered by our team of Specialist Tutors.

Programmes being offered:

- PSLE Maths Heuristics Problem-Solving Strategies Workshop
- Primary 5 Maths Heuristics Problem-Solving Strategies Workshop
- PSLE Science Answering Techniques (Experiment and Application Questions)
- Primary 5 Science Answering Techniques (Experiment and Application Questions)
- Bengkel Persiapan PSLE - Karangan
- Bengkel Saya Boleh Mengarang - Darjah 5
- Bengkel Persiapan PSLE - Bahasa (Imbuhan)
- Bengkel Bahasa Melayu Darjah 5 – Imbuhan
- Bengkel Persiapan O-Level Bahasa Melayu (Express)

All **current students** enrolled in any of our 2023 Weekly Tuition Programme (all centres) are eligible for a **discount of up to \$40 per programme** plus multiple programmes/sibling discounts of **additional \$10 or \$15 per programme**. To register, kindly visit our website at www.edufont.com or approach our admin staff at the reception at any of our centres.

Warmest regards,

Yang Iskandar (Mr)
Principal

Primary Mathematics Workshop

Programme Developer: Mr Yang Iskandar, Principal Tutor [MSc, BBA (Hons), NUS Research Scholar, PGDE (NIE/NTU), Former HOD]

PSLE Maths Heuristics Problem-Solving Strategies Workshop

The PSLE Maths Heuristics Problem-Solving Strategy Workshop is a 2-day x 3hr intensive programme to equip Primary 6 pupils with intermediate to advanced strategies to solve challenging and non-routine questions that commonly appear in the Paper 2 of PSLE Mathematics. The strategies taught would cut across the key topics in the Primary Mathematics syllabus - Fractions, Ratio, Decimals and Percentage. Some of the strategies that would be taught are: 1) Advance Model drawing, 2) Remainder Concept / Branching, 3) Listing, 4) Repeated Identity, 5) External Unchanged, 6) Total Unchanged, 7) Constant Difference 8) Equal fractions and many more.

Duration: 2 days x 3hrs (Total: 6 hrs – equivalent to 1 month of tuition)

Levels: Primary 6

Target Group: Low/Mid-achieving Level (students scoring less than 70%)

Fees (excluding GST):

- New students: \$240
- Former Students: \$220 (\$20 off)
- Current Students: \$200 (\$40 off)

(Fees inclusive of materials, door-step delivery and video recording of lessons)

Schedule:

Live-Online via Zoom:

- 13 & 14 March (Mon - Tue), 10am to 1pm
- 15 & 16 March (Wed - Thu), 2pm to 5pm



Primary 5 Maths Heuristics Problem-Solving Strategies Workshop

The Primary 5 Maths Heuristics Problem-Solving Strategy Workshop is a 2-day x 3hr intensive programme to equip Primary 5 pupils with intermediate to advanced strategies to solve challenging and non-routine questions that commonly appear in the Paper 2 and to prepare them for the rigour of the PSLE early. The strategies taught would cut across several key topics in the Primary Mathematics syllabus such as Numbers and Fractions. Some of the strategies that would be taught are: 1) Advance Model drawing, 2) Remainder Concept / Branching, 3) Guess and Check and Listing, 4) Repeated Identity, 5) External Unchanged, 6) Total Unchanged, 7) Constant Difference and 8) Equal fractions.

Duration: 2 days x 3hrs (Total: 6 hrs – equivalent to 1 month of tuition)

Levels: Primary 5

Target Group: Low/Mid Ability Level (students scoring less than 80%)

Fees (excluding GST):

- New students: \$240
- Former Students: \$220 (\$20 off)
- Current Students: \$200 (\$40 off)

(Fees inclusive of materials, door-step delivery and video recording of lessons)

Schedule:

Live-Online via Zoom:

- 13 & 14 March (Mon - Tue), 10am to 1pm



Primary Science Workshop

Programme Developer: Mr Yang Iskandar, Principal Tutor [MSc, BBA (Hons), NUS Research Scholar, PGDE (NIE/NTU), Former HOD]

PSLE Science Answering Techniques Workshop (Experiment and Application Questions)

The PSLE Science Answering Techniques Workshop is a highly popular 2-day x 3hr programme to equip students with the Process Skills and Answering Strategies to score in PSLE Science. Students would be taught strategies on how to apply concepts and process skills to challenging higher-order problems and to answer the Open-Ended questions in Section B with confidence and precision.

The following **PSLE question-type and concepts** would be explicitly discussed during the workshop:

1) Experimental Techniques

- Identifying AIM of experiment
- Identifying the Variables (Constant, Changed, Dependent, Measured)
- Designing a FAIR TEST
- Creating a CONTROL setup
- Analysing results, data and graphs

2) Application-type questions (challenging!)

- Step-by-step template to conquer application question using the heuristics approach
- Techniques to link science concepts to question

Duration: 2 days x 3hrs (Total: 6 hrs – equivalent to 1 month of tuition)

Levels: Primary 6

Target Group: All Ability Levels

Fees (excluding GST):

- New students: \$240
- Former Students: \$220 (\$20 off)
- Current Students: \$200 (\$40 off)

(Fees inclusive of materials, door-step delivery and video recording of lessons)

Schedule:

Live-Online via Zoom:

- 13 & 14 March (Mon - Tue), 2pm to 5pm
- 15 & 16 March (Wed - Thu), 10am to 1pm



Primary 5 Science Answering Techniques Workshop (Experiment and Application Questions)

The Primary 5 Science Answering Techniques Workshop is a highly popular 2-day x 3hr programme to equip students with the Process Skills and Answering Strategies to score in PSLE Science. Students would be taught strategies on how to apply concepts and process skills to challenging higher-order problems and to answer the Open-Ended questions in Section B with confidence and precision.

The following PSLE question-type and concepts would be explicitly discussed during the workshop:

1) Experimental Techniques

- Identifying AIM of experiment
- Identifying the Variables (Constant, Changed, Dependent, Measured)
- Designing a FAIR TEST
- Creating a CONTROL setup
- Analysing results, data and graphs

2) Application-type questions (challenging!)

- Step-by-step template to conquer application question using the heuristics approach
- Techniques to link science concepts to question

Duration: 2 days x 3hrs (Total: 6 hrs – equivalent to 1 month of tuition)

Levels: Primary 5

Target Group: All Ability Levels

Fees (excluding GST):

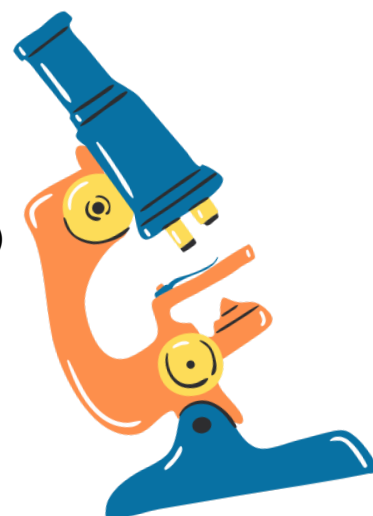
- New students: \$240
- Former Students: \$220 (\$20 off)
- Current Students: \$200 (\$40 off)

(Fees inclusive of materials, door-step delivery and video recording of lessons)

Schedule:

Live-Online via Zoom:

- 13 & 14 March (Mon - Tue), 2pm to 5pm



Register online at www.edufont.com or approach our friendly admin staff on duty

Bengkel Bahasa Melayu dan Persiapan PSLE/MYE/O-Level Cuti Sekolah Bulan Mac 2023

2023 March School Holiday Malay Language Enrichment and Workshops

Bengkel Persiapan PSLE - Karangan

Programme Director: Cikgu Hayati Abdullah, Best-selling Book Author of the 'Saya Boleh Mengarang' series. Principal and Director at NUSA and Edufront Learning Centre.

This 6-hr workshop aims to build students' confidence and mastery in PSLE Malay Paper 1 component (Karangan). In this workshop students would explore proven strategies to write a great composition based on Cikgu Hayati Abdullah's best-selling book and programme – Saya Boleh Mengarang. These include strategies to create a captivating plot, techniques to elicit writer's voice, usage of powerful vocabulary and sentence structures.

Duration: 2 days x 3hrs (Total: 6 hrs - equivalent to 1 month of tuition)

Level: Primary 6

Target Group: All Ability Levels

Fees (excluding GST):

- New students: \$240
- Former Students: \$220 (\$20 off)
- Current Students: \$200 (\$40 off)

(Fees inclusive of materials, door-step delivery and video recording of lessons)

Schedule:

Live-Online via Zoom:

- 13 & 14 March (Mon - Tue), 2pm to 5pm
- 15 & 16 March (Wed - Thu), 10am to 1pm

Bengkel Saya Boleh Mengarang - Darjah 5

Programme Director: Cikgu Hayati Abdullah, Best-selling Book Author of the 'Saya Boleh Mengarang' series. Principal and Director at NUSA and Edufront Learning Centre.

This 6-hr workshop aims to build students' confidence and mastery in PSLE Malay Paper 1 component (Karangan). In this workshop students would explore proven strategies to write a great composition based on Cikgu Hayati Abdullah's best-selling book and programme – Saya Boleh Mengarang. These include strategies to create a captivating plot, techniques to elicit writer's voice, usage of powerful vocabulary and sentence structures.

Duration: 2 days x 3hrs (Total: 6 hrs - equivalent to 1 month of tuition)

Levels: Primary 5

Target Group: All Ability Levels

Fees (excluding GST):

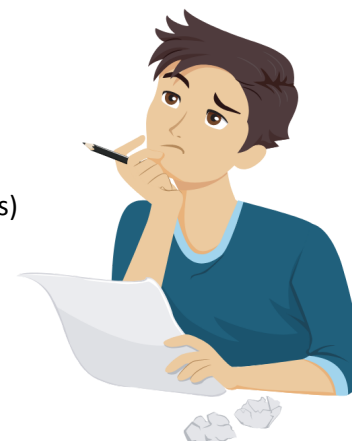
- New students: \$240
- Former Students: \$220 (\$20 off)
- Current Students: \$200 (\$40 off)

(Fees inclusive of materials, door-step delivery and video recording of lessons)

Schedule:

Live-Online via Zoom:

- 15 & 16 March (Wed - Thu), 10am to 1pm



Bengkel Persiapan PSLE – Bahasa (Imbuhan)

Programme Director: Cikgu Hayati Abdullah, Best-selling Book Author of the ‘Saya Boleh Mengarang’ series. Principal and Director at NUSA and Edufront Learning Centre.

This 6-hr workshop aims to help students unravel the functions of the different Imbuhan to enable them to ace the 20 marks Imbuhan component in Paper 2. We will be covering all the ‘Awalan’ , ‘Apitan’ and ‘Akhiran’ taught and tested in the Primary School Malay Syllabus. Students will also learn to craft creative and powerful sentences using the various Imbuhan learnt.

Duration: 2 days x 3hrs (Total: 6 hrs - equivalent to 1 month of tuition)

Level: Primary 6

Target Group: All Ability Levels

Fees (excluding GST):

- New students: \$240
- Former Students: \$220 (\$20 off)
- Current Students: \$200 (\$40 off)

(Fees inclusive of materials, door-step delivery and video recording of lessons)

Schedule:

Live-Online via Zoom:

- 13 & 14 March (Mon - Tue), 10am to 1pm
- 15 & 16 March (Wed - Thu), 2pm to 5pm

Bengkel Bahasa Melayu Darjah 5 - Imbuhan

This 6-hr workshop aims to help students unravel the functions of the different Imbuhan to enable them to ace the 20 marks Imbuhan component in Paper 2. We will be covering all the ‘Awalan’ , ‘Apitan’ and ‘Akhiran’ taught and tested in the Primary School Malay Syllabus. Students will also learn to craft creative and powerful sentences using the various Imbuhan learnt.

Duration: 2 days x 3hrs (Total: 6 hrs - equivalent to 1 month of tuition)

Level: Primary 5

Target Group: All Ability Levels

Fees (excluding GST):

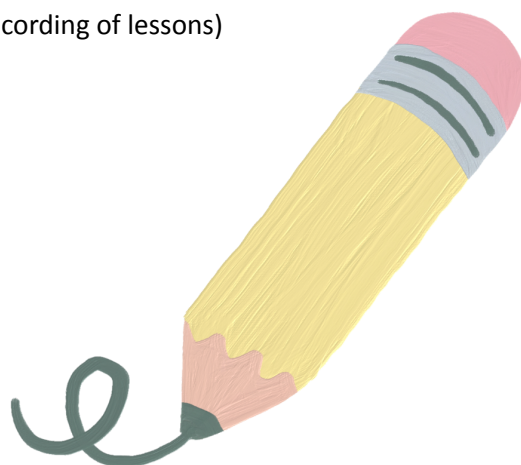
- New students: \$240
- Former Students: \$220 (\$20 off)
- Current Students: \$200 (\$40 off)

(Fees inclusive of materials, door-step delivery and video recording of lessons)

Schedule:

Live-Online via Zoom:

- 15 & 16 March (Wed - Thu), 2pm to 5pm



Bengkel Persiapan O-Level Bahasa Melayu (Express)

This 6-hr workshop will cover both the Paper 1 and Paper 2 components. We will cover writing techniques and sample compositions for 'Ekspositori', 'Naratif' and 'Deskriptif' writings as well as 'E-mel Rasmi' and 'E-mel Tidak Rasmi'.

For Paper 2 we will focus on understanding the functions of various Imbuhan, strategies to learn and answer Peribahasa questions as well as the answering techniques for Kefahaman.

Duration: 2 days x 3hrs (Total: 6 hrs - equivalent to 1 month of tuition)

Level: Secondary 3 and 4

Target Group: All Ability Levels

Fees (excluding GST):

- New students: \$300
- Former Students: \$280 (\$20 off)
- Current Students: \$260 (\$40 off)

(Fees inclusive of materials, door-step delivery and video recording of lessons)

Schedule:

Live-Online via Zoom:

- 13 & 14 March (Mon - Tue), 2pm to 5pm
- 15 & 16 March (Wed - Thu), 2pm to 5pm



Register online at www.malaytuitions.sg or approach our friendly admin staff on duty