

# PSLE and P5 Intensive Revision Workshop

## 2022 June School Holiday (6-9 June, 13-16 June & 20-23 June)

@ Edufront Tampines, Choa Chu Kang and Hybrid Online

Dear Parents,

To further support our students in their academic achievements, we are offering our highly sought-after Intensive Revision programmes in the upcoming June School Holidays. The programmes are developed by our Principal Tutors – Mr Yang Iskandar (Maths and Science Programmes), Cikgu Hayati Abdullah (Malay Language Programmes) and would be delivered by our Specialist Tutors.



Programmes being offered are:

- PSLE Challenging Maths Problem Solving Strategies Workshop
- PSLE Maths Concepts Mastery Workshop
- Primary 5 Maths Problem Solving Strategies Workshop
- PSLE Science Open-Ended Answering Strategies Workshop (Topical)
- Primary 5 Science Open-Ended Answering Strategies Workshop (Topical)
- Bengkel Persiapan Lisan dan Karangan PSLE
- Bengkel Persiapan Bahasa Melayu PSLE (Kertas 2)
- Bengkel Persiapan Lisan dan Karangan Darjah 5
- Bengkel Persiapan Bahasa Melayu Kertas 2 Darjah 5

All **current students** enrolled in any of our 2022 Weekly Tuition Programme (all centres) are eligible for a **discount of \$40 per programme**. Additional package discounts of **up to \$20** are also available. **To register**, kindly visit our website at <https://edufont.com/school-holiday-workshop/> or approach our admin staff at the reception at any of our centres.

Warmest regards,

Yang Iskandar

Principal

Email: [principal@edufont.com](mailto:principal@edufont.com)

## Primary Mathematics Mastery Workshop

**Programme Developer: Mr Yang Iskandar, Principal Tutor [MSc, BBA (Hons), NUS Research Scholar, PGDE (NIE/NTU), Former HOD of Maris Stella High Primary School]**

### PSLE Challenging Maths Problem Solving Strategies Workshop

This ultimate 4-day x 3hr intensive programme equips Primary 6 pupils with intermediate to advanced strategies to solve challenging and non-routine questions that commonly appear in the Paper 2 of PSLE Mathematics.

Topics that would be covered:

- Numbers and Algebra
- Fractions
- Ratio and Percentage
- Circles
- Volume
- Geometry and 4-sided Figures
- Number patterns
- Speed

Some of the strategies that would be taught are: 1) Advance Model drawing, 2) Units and Parts and its variations, 3) Remainder Concept / Branching, 4) Repeated Identity, 5) External Unchanged, 6) Total Unchanged, 7) Constant Difference, 8) Equal fractions and many more.

**Duration:** 4 days x 3hrs (Total: 12hrs - equivalent to 2 months of tuition)

**Level:** Primary 6

**Fees (excluding GST):**

New students: \$400

Former Students: \$380 (\$20 off)

Current Students: \$360 (\$40 off)

(Fees inclusive of refreshments, registration and materials)

(Online-Hybrid: Fees inclusive of registration & Learning Materials delivery)

#### Schedule

Date	Time	Branch
6 - 9 June (Mon - Thur)	10am - 1pm	Tampines
13 - 16 June (Mon - Thur)	2pm - 5pm	Tampines
20 - 23 June (Mon - Thur)	2pm - 5pm	Tampines
6 - 9 June (Mon - Thur)	2pm - 5pm	Choa Chu Kang
13 - 16 June (Mon - Thur)	10am - 1pm	Choa Chu Kang
20 - 23 June (Mon - Thur)	10am - 1pm	Choa Chu Kang
20 - 23 June (Mon - Thur)	10am - 1pm	Online-Hybrid



Register online at [www.edufront.com](http://www.edufront.com) or approach our friendly admin staff on duty.

## PSLE Maths Concepts Mastery Workshop

The PSLE Mathematics Concepts Mastery Workshop is a 4-day x 3hr intensive programme to equip Primary 6 pupils with a strong conceptual understanding and problem-solving skills to overcome the rigour in PSLE Maths Paper 1 and the 2-3 marks questions from Paper 2. This programme is targeted at students who are scoring less than 60% in school and wish to reinforce and master key maths concepts.

Topics that would be covered:

- Numbers
- Fractions
- Measurement
- Area of Triangle
- Ratio and Percentage
- Rate
- Average
- Geometry

**Duration:** 4 days x 3hrs (Total: 12hrs - equivalent to 2 months of tuition)

**Level:** Primary 6 (students scoring less than 60%)

**Fees (excluding GST):**

New students: \$400

Former Students: \$380 (\$20 off)

Current Students: \$360 (\$40 off)

(Fees inclusive of refreshments, registration and materials)

(Online-Hybrid: Fees inclusive of registration & Learning Materials delivery)

**Schedule:**

Date	Time	Branch
6 - 9 June (Mon - Thur)	2pm - 5pm	Tampines
20 - 23 June (Mon - Thur)	2pm - 5pm	Tampines
6 - 9 June (Mon - Thur)	10am - 1pm	Choa Chu Kang
20 - 23 June (Mon - Thur)	10am - 1pm	Choa Chu Kang
6 - 9 June (Mon - Thur)	10am - 1pm	Online-Hybrid



Register online at [www.edufont.com](http://www.edufont.com) or approach our friendly admin staff on duty.

## Primary 5 Maths Problem Solving Strategies Workshop

This ultimate 4-day x 3hr intensive programme equips Primary 5 pupils with a strong conceptual understanding and problem-solving skills to overcome the rigour in Primary 5 Maths Paper 1 and the 2-3 marks questions from Paper 2. This programme is targeted at students who are scoring less than 60% in school and wish to reinforce and master key maths concepts.

Topics that would be covered:

- Numbers
- Fractions
- Decimals
- Measurement
- Area of Triangle
- Ratio
- Geometry
- Volume

**Duration:** 4 days x 3hrs (Total: 12hrs - equivalent to 2 months of tuition)

**Level:** Primary 5 (students scoring less than 60%)

**Fees (excluding GST):**

New students: \$400

Former Students: \$380 (\$20 off)

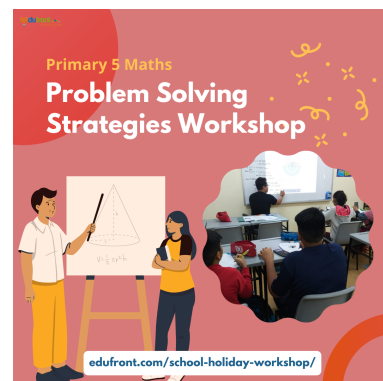
Current Students: \$360 (\$40 off)

(Fees inclusive of refreshments, registration and materials)

(Online-Hybrid: Fees inclusive of registration & Learning Materials delivery)

**Schedule:**

Date	Time	Branch
6 - 9 June (Mon - Thur)	10am - 1pm	Tampines
13 - 16 June (Mon - Thur)	2pm - 5pm	Tampines
6 - 9 June (Mon - Thu)	2pm - 5pm	Choa Chu Kang
13 - 16 June (Mon - Thur)	10am - 1pm	Choa Chu Kang
13 - 16 June (Mon - Thur)	10am - 1pm	Online-Hybrid



Register online at [www.edufont.com](http://www.edufont.com) or approach our friendly admin staff on duty.

## Primary Science Mastery Workshop

**Programme Developer:** Mr Yang Iskandar, Principal Tutor [MSc, BBA (Hons), NUS Research Scholar, PGDE (NIE/NTU), Former HOD of Maris Stella High Primary School]

### PSLE Science Open-Ended Answering Strategies Workshop

The PSLE Science Open-Ended Answering Strategies Workshop is a highly popular 4-day x 3hr programme to equip students with the **Process Skills** and **Answering Strategies** to score in PSLE Science. Students would be taught strategies on how to apply concepts and process skills to challenging higher-order problems and to answer the Open-Ended questions in Section B with confidence and precision.

Topics that would be covered:

1. Forces
2. Energy Conversion
3. Photosynthesis
4. Plant and Human Transport System
5. Electricity
6. Plant Reproduction
7. Water
8. Magnets
9. Light
10. Heat
11. Digestive System
12. Matter

**Duration:** 4 days x 3hrs (Total: 12hrs - equivalent to 2 months of tuition)

**Level:** Primary 6

**Fees (excluding GST):**

New students: \$400

Former Students: \$380 (\$20 off)

Current Students: \$360 (\$40 off)

(Fees inclusive of refreshments, registration and materials)

(Online-Hybrid: Fees inclusive of registration & Learning Materials delivery)

**Schedule:**

Date	Time	Branch
6 - 9 June (Mon - Thur)	2pm - 5pm	Tampines
13 - 16 June (Mon - Thur)	10am - 1pm	Tampines
20 - 23 June (Mon - Thur)	10am - 1pm	Tampines
6 - 9 June (Mon - Thur)	10am - 1pm	Choa Chu Kang
13 - 16 June (Mon - Thur)	2pm - 5pm	Choa Chu Kang
20 - 23 June (Mon - Thur)	2pm - 5pm	Choa Chu Kang
20 - 23 June (Mon - Thur)	2pm - 5pm	Online-Hybrid



Register online at [www.edufont.com](http://www.edufont.com) or approach our friendly admin staff on duty.

## Primary 5 Science Open-Ended Answering Strategies Workshop

The Primary 5 Science Open-Ended Answering Techniques Workshop is a highly popular 4-day x 3hr programme to equip students with the **Process Skills** and **Answering Strategies** to score in Primary 5 Science. Students would be taught strategies on how to apply concepts and process skills to challenging higher-order problems and to answer the Open-Ended questions in Section B with confidence and precision.

Topics that would be covered:

1. Matter
2. Materials
3. Cycles in plants and animals
4. Digestive system
5. Light
6. Heat
7. Magnets
8. Water
9. Cells
10. Plant reproduction
11. Human reproduction
12. Human respiratory and circulatory system

**Duration:** 4 days x 3hrs (Total: 12hrs - equivalent to 2 months of tuition)

**Level:** Primary 5

**Fees (excluding GST):**

New students: \$400

Former Students: \$380 (\$20 off)

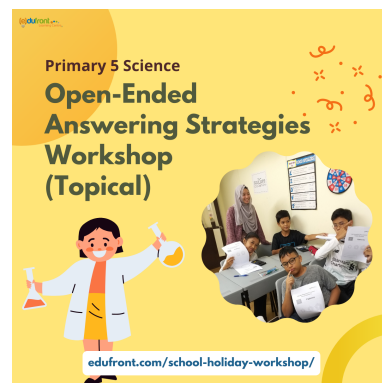
Current Students: \$360 (\$40 off)

(Fees inclusive of refreshments, registration and materials)

(Online-Hybrid: Fees inclusive of registration & Learning Materials delivery)

**Schedule:**

Date	Time	Branch
6 - 9 June (Mon - Thur)	2pm to 5pm	Tampines
6 - 9 June (Mon - Thur)	10am - 1pm	Choa Chu Kang
6 - 9 June (Mon - Thur)	10am - 1pm	Online-Hybrid



Register online at [www.edufront.com](http://www.edufront.com) or approach our friendly admin staff on duty.

## Malay Enrichment and PSLE Revision Programme

**Programme Director: Cikgu Hayati Abdullah, Former Malay and Higher Malay Subject Coordinator at Cedar Girls Secondary, Best-selling Book Author of the Saya Boleh Mengarang series. Principal and Director at NUSA and Edufront Learning Centre.**

### Bengkel Persiapan Lisan dan Karangan PSLE

This 12-hr workshop aims to build students' confidence and mastery in PSLE Malay Paper 1 and the Oral component. In the Paper 1 component (writing), students would explore proven strategies to write a great composition based on Cikgu Hayati Abdullah's best-selling book and programme – "Saya Boleh Mengarang". These include strategies to plan, expand and organize ideas, techniques to elicit writer's voice, usage of appropriate words, vocabulary and sentence structures.

In the Oral reading component, pupils would be taught strategies to read aloud with clear articulation, diction and expressiveness. In the video-based conversation component, students would be taught the strategies to develop a meaningful and coherent thematic conversation based on the video content. The programme would also provide a comprehensive coverage of the common themes in the PSLE Oral component based on past and current trends.

**Duration:** 4 days x 3hrs (Total: 12hrs - equivalent to 2 months of tuition)

**Level:** Primary 6

**Fees (excluding GST):**

New students: \$400

Former Students: \$380 (\$20 off)

Current Students: \$360 (\$40 off)

(Fees inclusive of refreshments, registration and materials)

(Online-Hybrid: Fees inclusive of registration & Learning Materials delivery)

### Schedule:

Date	Time	Branch
13 - 16 June (Mon - Thur)	2pm - 5pm	Tampines
20 - 23 June (Mon - Thur)	10am - 1pm	Tampines
13 - 16 June (Mon - Thur)	10am - 1pm	Choa Chu Kang
20 - 23 June (Mon - Thur)	2pm - 5pm	Choa Chu Kang
13 - 16 June (Mon - Thur)	10am - 1pm	Online-Hybrid



Register online at [www.edufont.com](http://www.edufont.com) or approach our friendly admin staff on duty.



## Bengkel Persiapan Bahasa Melayu PSLE (Kertas 2)

This workshop prepares students to score in the Paper 2 component of PSLE Malay Language paper. It covers the major components such as grammar, peribahasa, imbuhan, vocabulary, frasa and comprehension (objective, subjective and graphic-stimulus).

**Duration:** 4 days x 3hrs (Total: 12hrs - equivalent to 2 months of tuition)

**Level:** Primary 6

**Fees (excluding GST):**

New students: \$400

Former Students: \$380 (\$20 off)

Current Students: \$360 (\$40 off)

(Fees inclusive of refreshments, registration and materials)

(Online-Hybrid: Fees inclusive of registration & Learning Materials delivery)

**Schedule:**

Date	Time	Branch
6 - 9 June (Mon - Thur)	10am - 1pm	Tampines
13 - 16 June (Mon - Thur)	10am - 1pm	Tampines
20 - 23 June (Mon - Thur)	2pm - 5pm	Tampines
6 - 9 June (Mon - Thur)	2pm - 5pm	Choa Chu Kang
13 - 16 June (Mon - Thur)	2pm - 5pm	Choa Chu Kang
20 - 23 June (Mon - Thur)	10am - 1pm	Choa Chu Kang
20 - 23 June (Mon - Thur)	10am - 1pm	Online-Hybrid



Register online at [www.edufront.com](http://www.edufront.com) or approach our friendly admin staff on duty.



## Bengkel Persiapan Lisan dan Karangan Darjah 5

This 12-hr workshop aims to build students' confidence and mastery in the Primary 5 and PSLE Malay Paper 1 and the Oral component. In the Paper 1 component (writing), students would explore proven strategies to write a great composition based on Cikgu Hayati Abdullah's best-selling book and programme – "Saya Boleh Mengarang". These include strategies to plan, expand and organize ideas, techniques to elicit writer's voice, usage of appropriate words, vocabulary and sentence structures.

In the Oral reading component, pupils would be taught strategies to read aloud with clear articulation, diction and expressiveness. In the video-based conversation component, students would be taught the strategies to develop a meaningful and coherent thematic conversation based on the video content. The programme would also provide a comprehensive coverage of the common themes in the PSLE Oral component based on past and current trends.

**Duration:** 4 days x 3hrs (Total: 12hrs - equivalent to 2 months of tuition)

**Level:** Primary 5

**Fees (excluding GST):**

New students: \$400

Former Students: \$380 (\$20 off)

Current Students: \$360 (\$40 off)

(Fees inclusive of refreshments, registration and materials)

(Online-Hybrid: Fees inclusive of registration & Learning Materials delivery)

**Schedule:**

Date	Time	Branch
20 - 23 June (Mon - Thur)	10am - 1pm	Tampines
20 - 23 June (Mon - Thur)	2pm - 5pm	Choa Chu Kang
20 - 23 June (Mon - Thur)	2pm - 5pm	Online-Hybrid



Register online at [www.edufont.com](http://www.edufont.com) or approach our friendly admin staff on duty.

## Bengkel Persiapan Bahasa Melayu Kertas 2 Darjah 5

This workshop prepares students to score in the Paper 2 component of the Primary 5 and PSLE Malay Language paper. It covers the major components such as grammar, peribahasa, imbuhan, vocabulary, frasa and comprehension (objective, subjective and graphic-stimulus).

**Duration:** 4 days x 3hrs (Total: 12hrs - equivalent to 2 months of tuition)

**Level:** Primary 5

**Fees (excluding GST):**

New students: \$400

Former Students: \$380 (\$20 off)

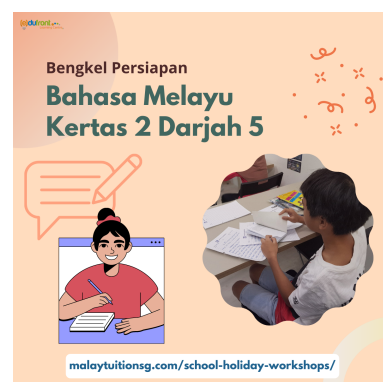
Current Students: \$360 (\$40 off)

(Fees inclusive of refreshments, registration and materials)

(Online-Hybrid: Fees inclusive of registration & Learning Materials delivery)

**Schedule:**

Date	Time	Branch
13 - 16 June (Mon - Thur)	10am - 1pm	Tampines
13 - 16 June (Mon - Thur)	2pm - 5pm	Choa Chu Kang
13 - 16 June (Mon - Thur)	2pm - 5pm	Online-Hybrid



Register online at [www.edufront.com](http://www.edufront.com) or approach our friendly admin staff on duty.